



# Wicked Open Defecation – Contemplations from Nepal

---

**Sanna-Leena Rautanen**

**Rural Water Supply and Sanitation Project in Western Nepal Phase II**

**xx.08.2018, Tampere, Finland**



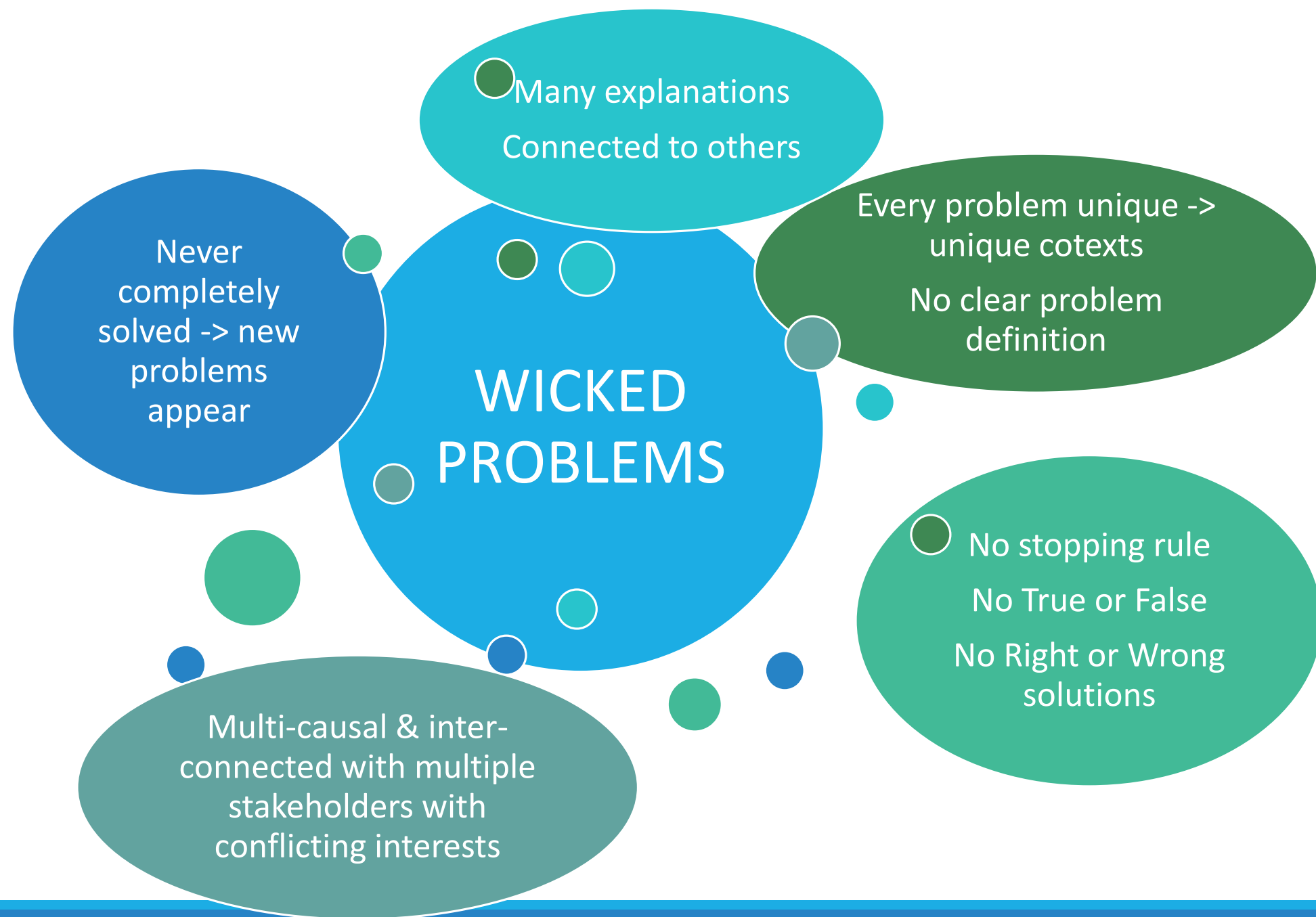
Is this a  
'Wicked  
Problem'?



	<b>TAME</b>	<b>COMPLEX</b>	<b>WICKED</b>
Nature of problem	Agree	Agree	Disagree
Best solution	Agree	Disagree	Disagree

---



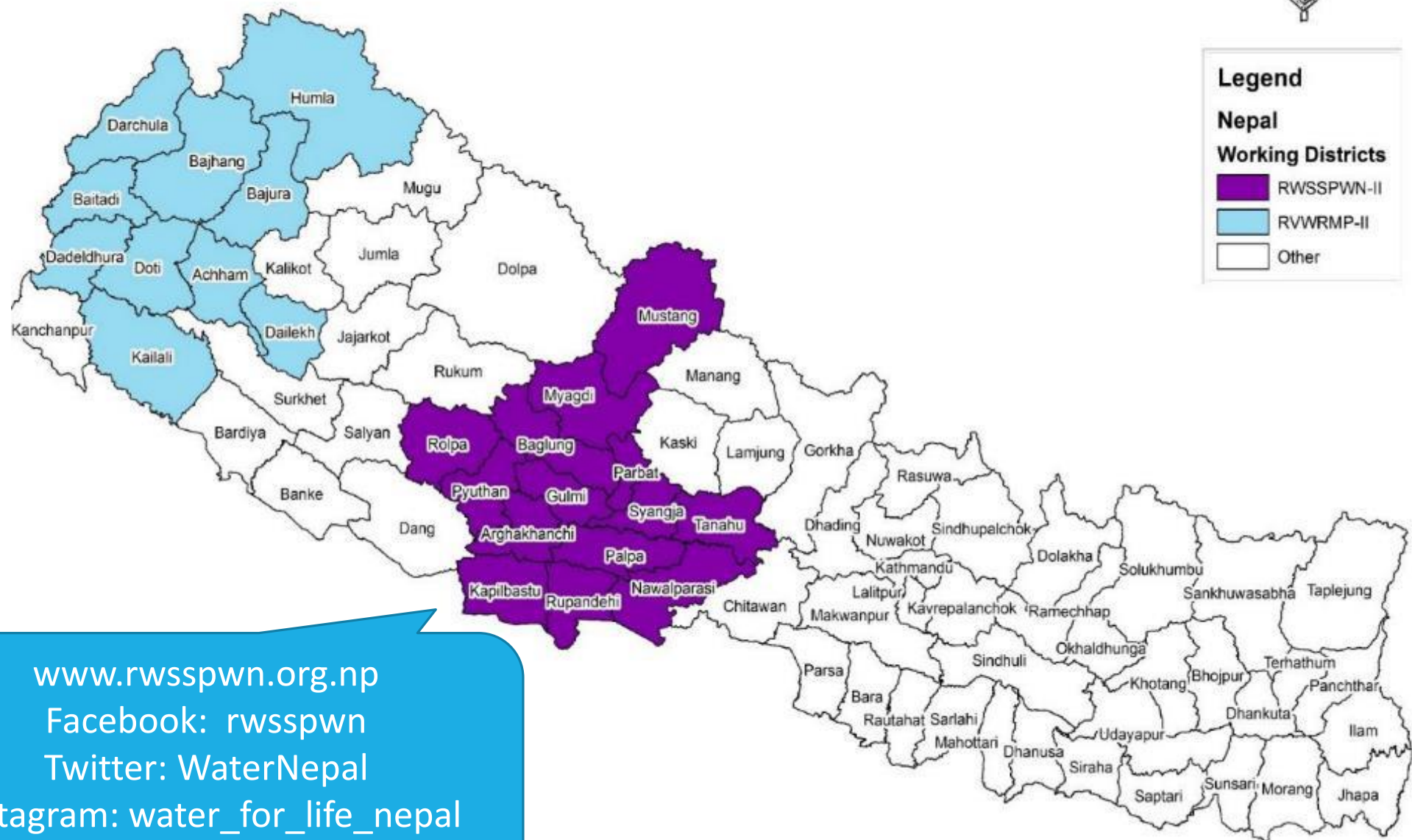




Rural Water Supply & Sanitation Project in Western Nepal Phase II (RWSSP-WN II) supports the Government of Nepal to achieve improved health and fulfilment of the equal right to water and sanitation for the inhabitants of the Project area

---

WASH for All – Serving the Unserved



[www.rwsspwn.org.np](http://www.rwsspwn.org.np)

Facebook: [rwsspwn](#)

Twitter: [WaterNepal](#)

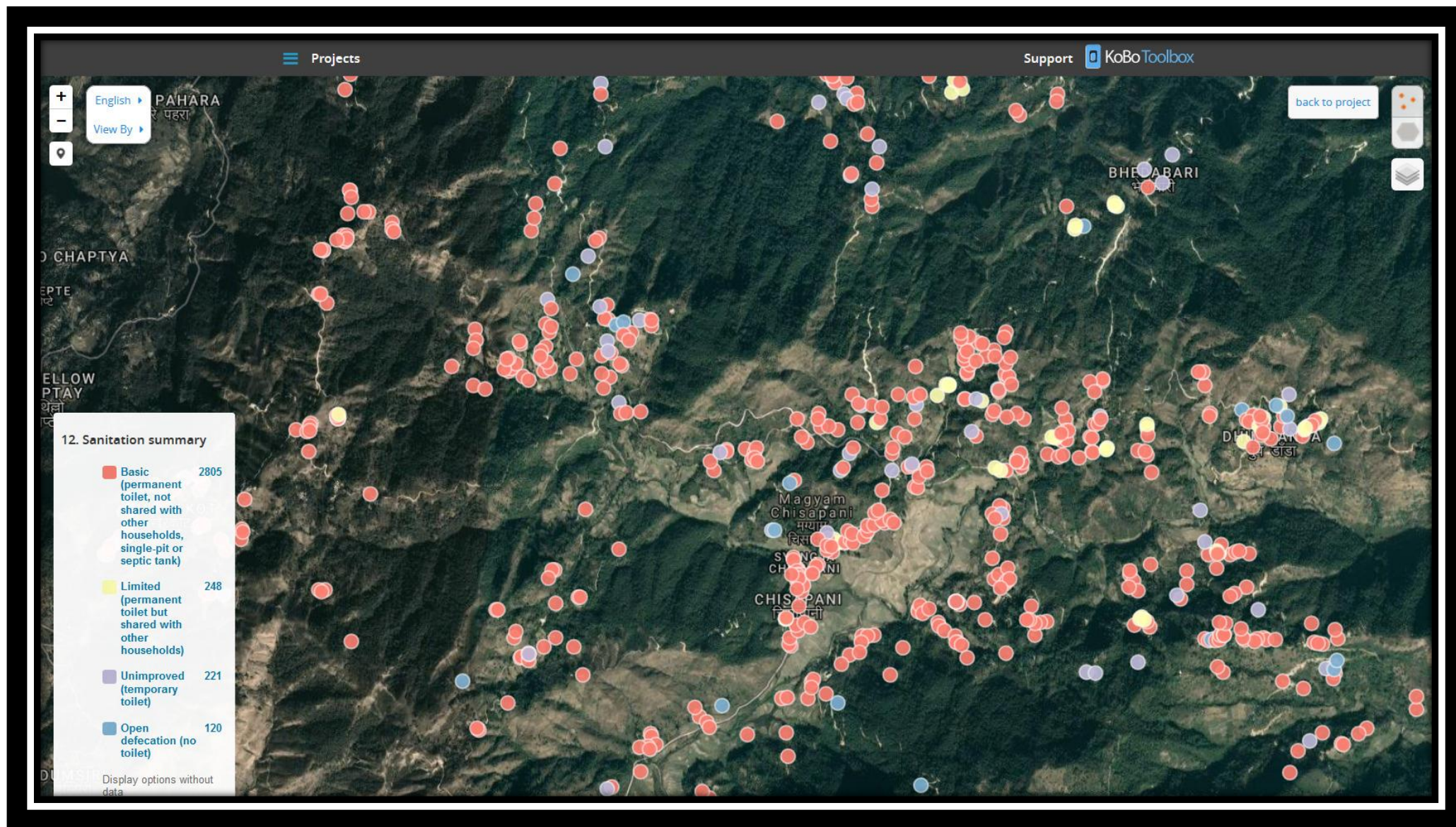
Instagram: [water\\_for\\_life\\_nepal](#)

YouTube: [RWSSP-WN II](#)

Great  
progress  
in terms  
of ODF







Safely managed sanitation  
@ Harinas Municipality WASH Plan, Syangja

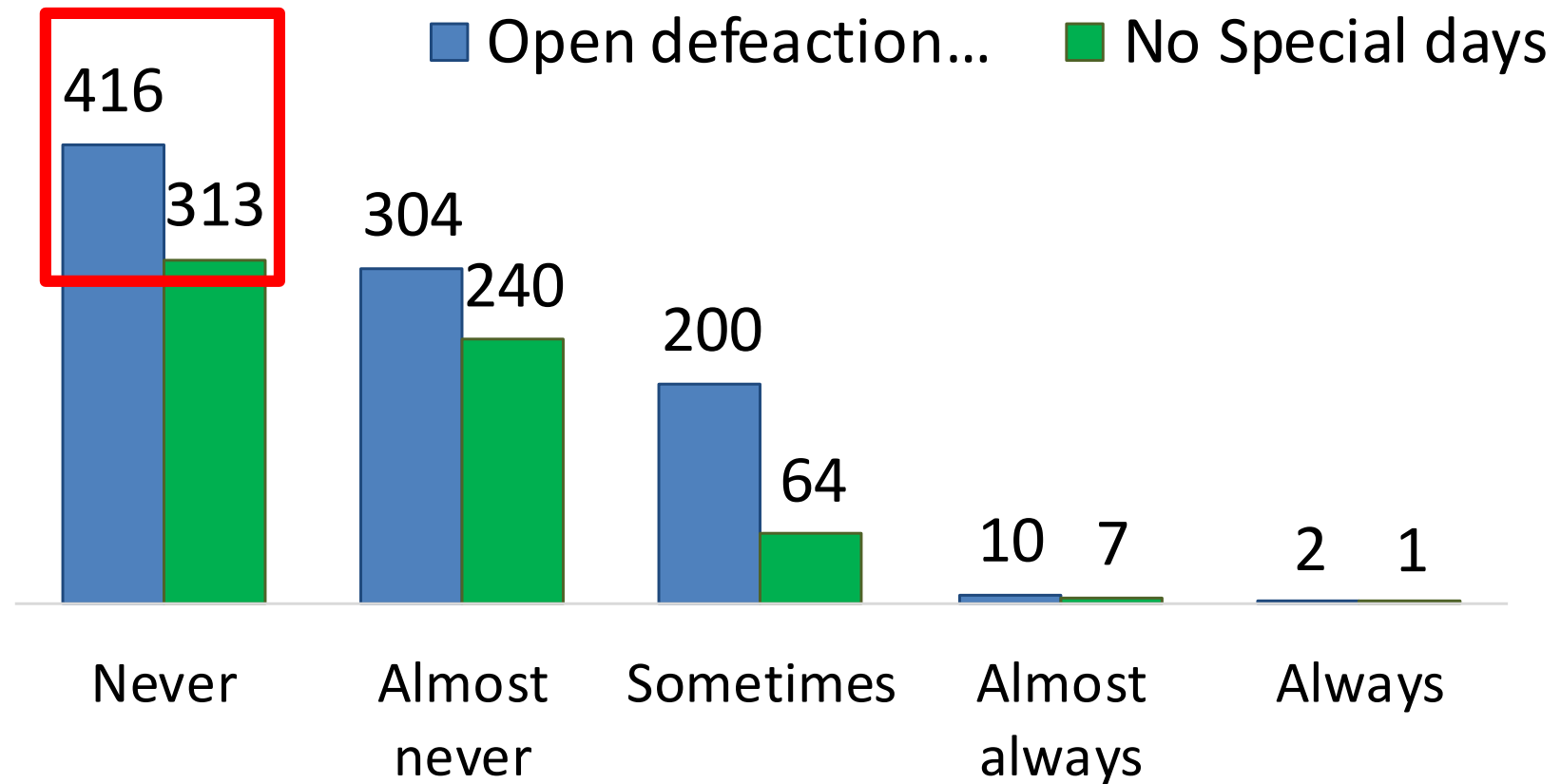


*In last seven days,  
how often did you  
practice open  
defecation?*

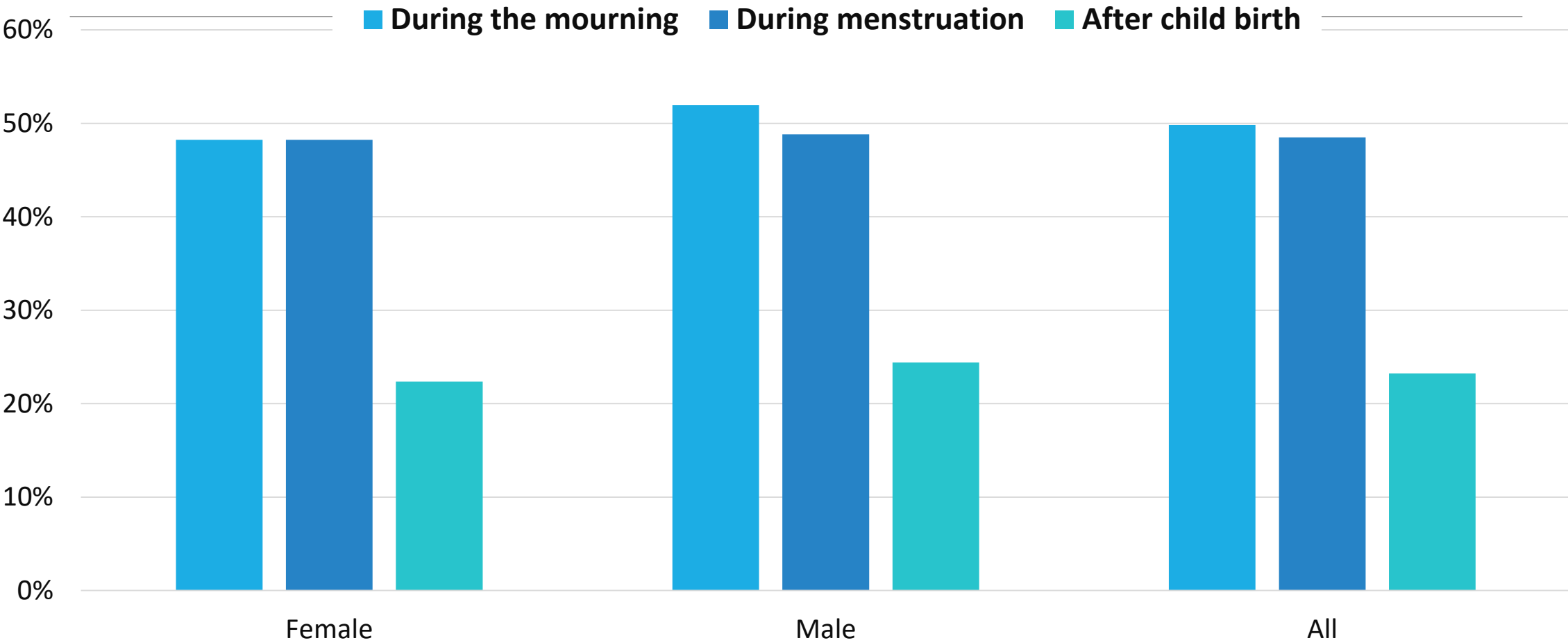
N – 932

Do you have any  
special days when  
you do not use  
toilet?

Out of 932, total  
625 did not have  
special days



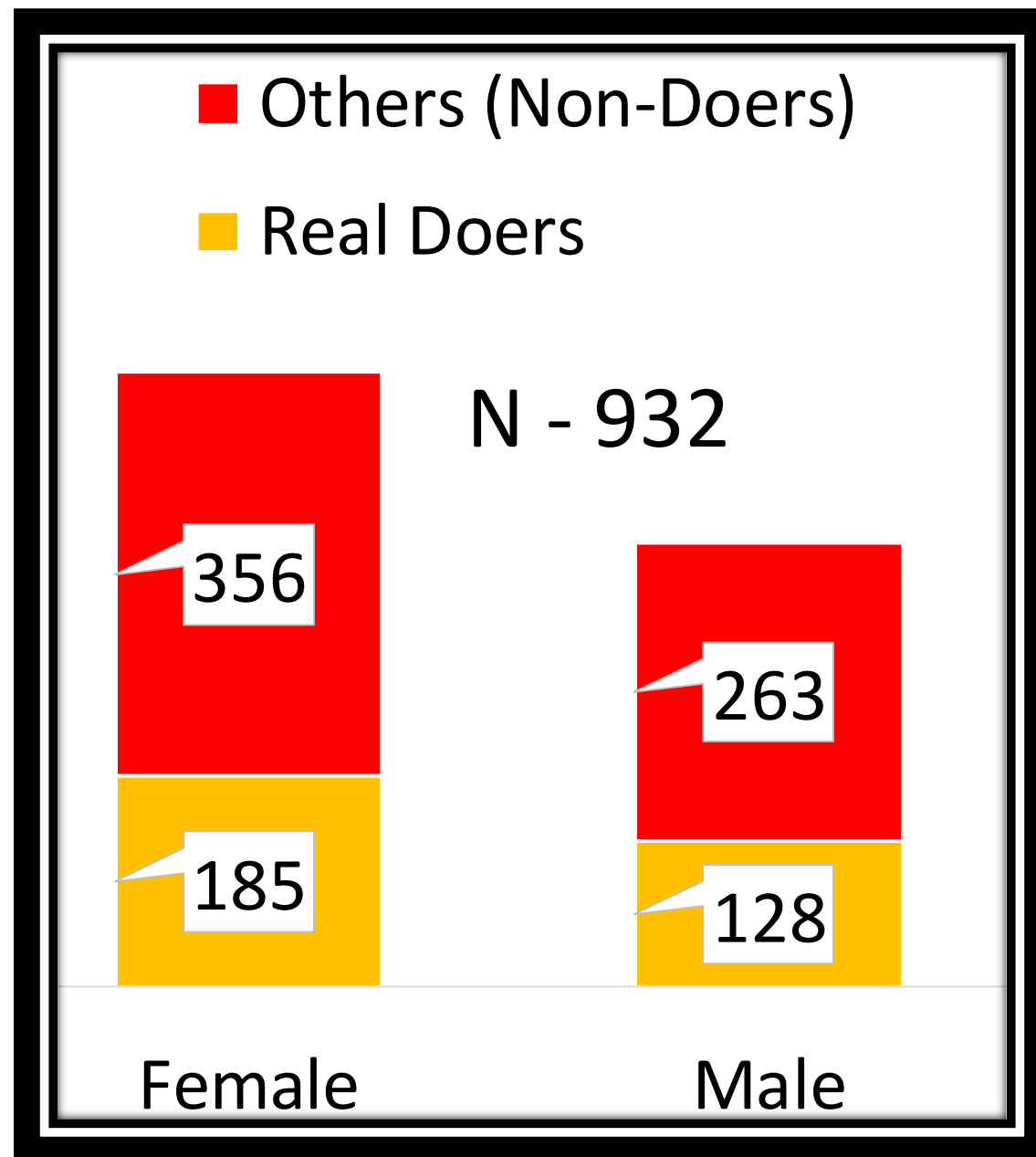
**Are there any special times when you do not use the toilet?**  
Total 'Yes' 297 (38% out of total sample)



## Toilet use survey

Total: 932

- All ODF declared locations
- All have toilets except one
- 98% permanent toilets
- Only two temporary toilets, both with privacy (can be used)
- **Only 12% 'Real Doers'**





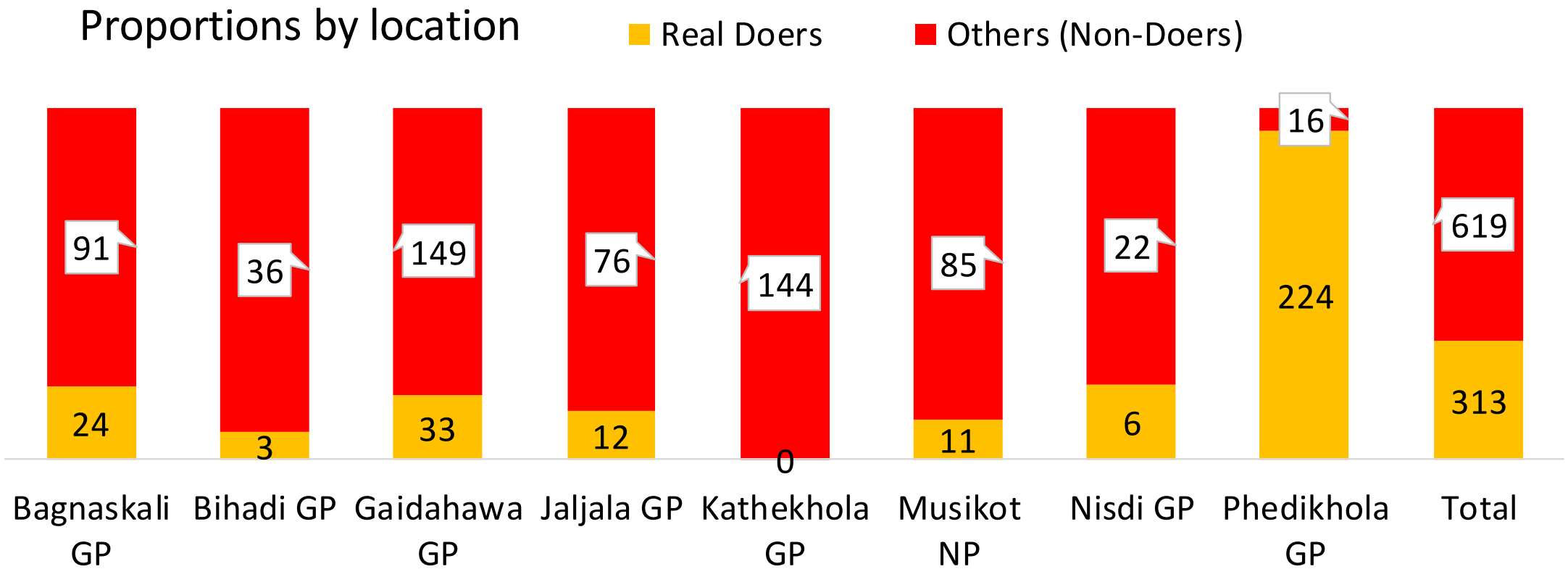
**Q:** *In last seven days, how often did you practice open defecation?* Reply “Never” = uses toilet = “Doer”



**Q:** Do you have any special days when you would not use the toilet?

Reply: ‘No’ = Doer    Reply anything else: ‘Non-doer’

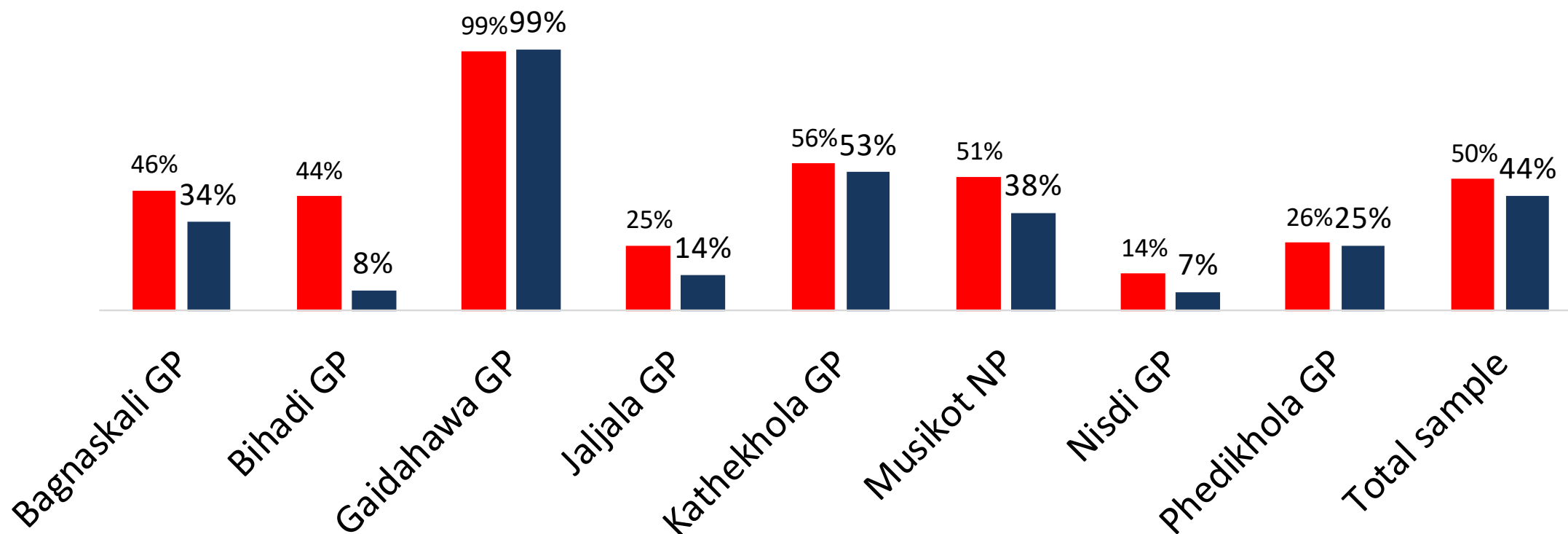
Real doer: ‘Never’ + ‘No’



% of total respondents in each municipality  
*"It is likely or very likely that if I go for open defeaction, ... "*



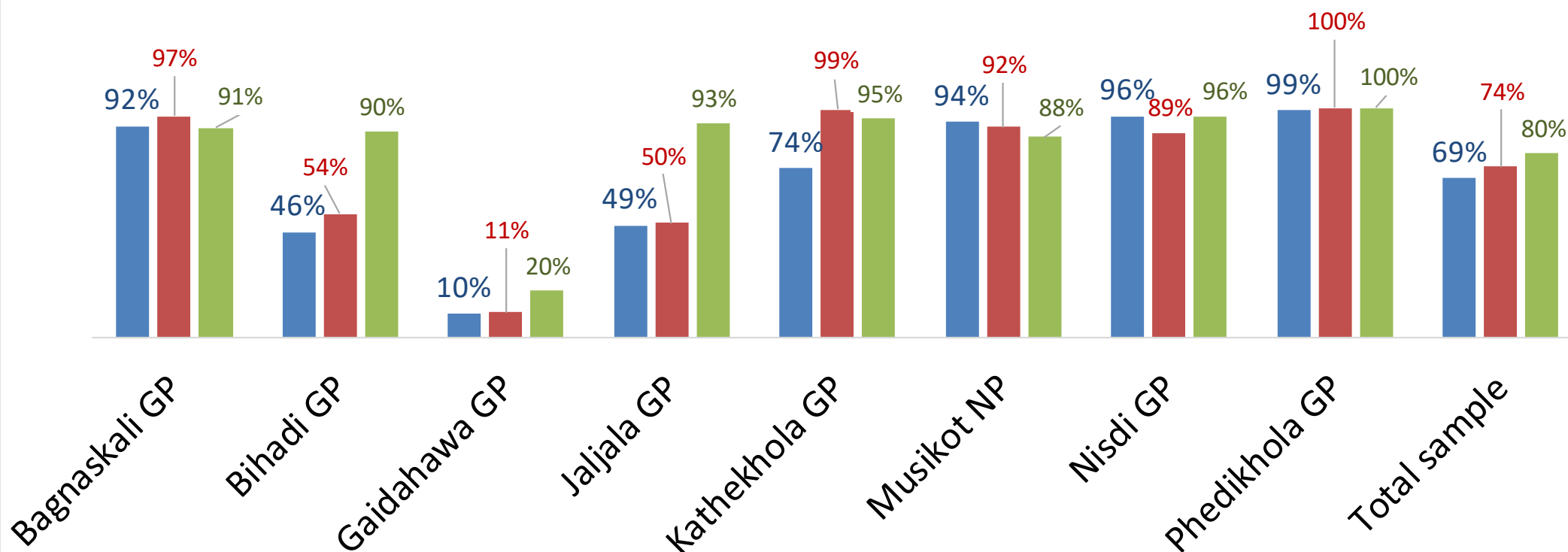
■ ... snake or other wild animal bites me      ■ ... I will be harassed



% for "All would disapprove" + "Most would disapprove"  
of total respondents in each municipality  
"Imagine that ... "



- ... young child practiced open defecation: How much would people in your community approve or disapprove?
- ... elderly person practiced open defecation: How much would people in your community approve or disapprove?
- ... you practiced open defecation: How much would people in your family approve or disapprove?





# Conclusions: Continuum in between 'tame' and 'wicked'

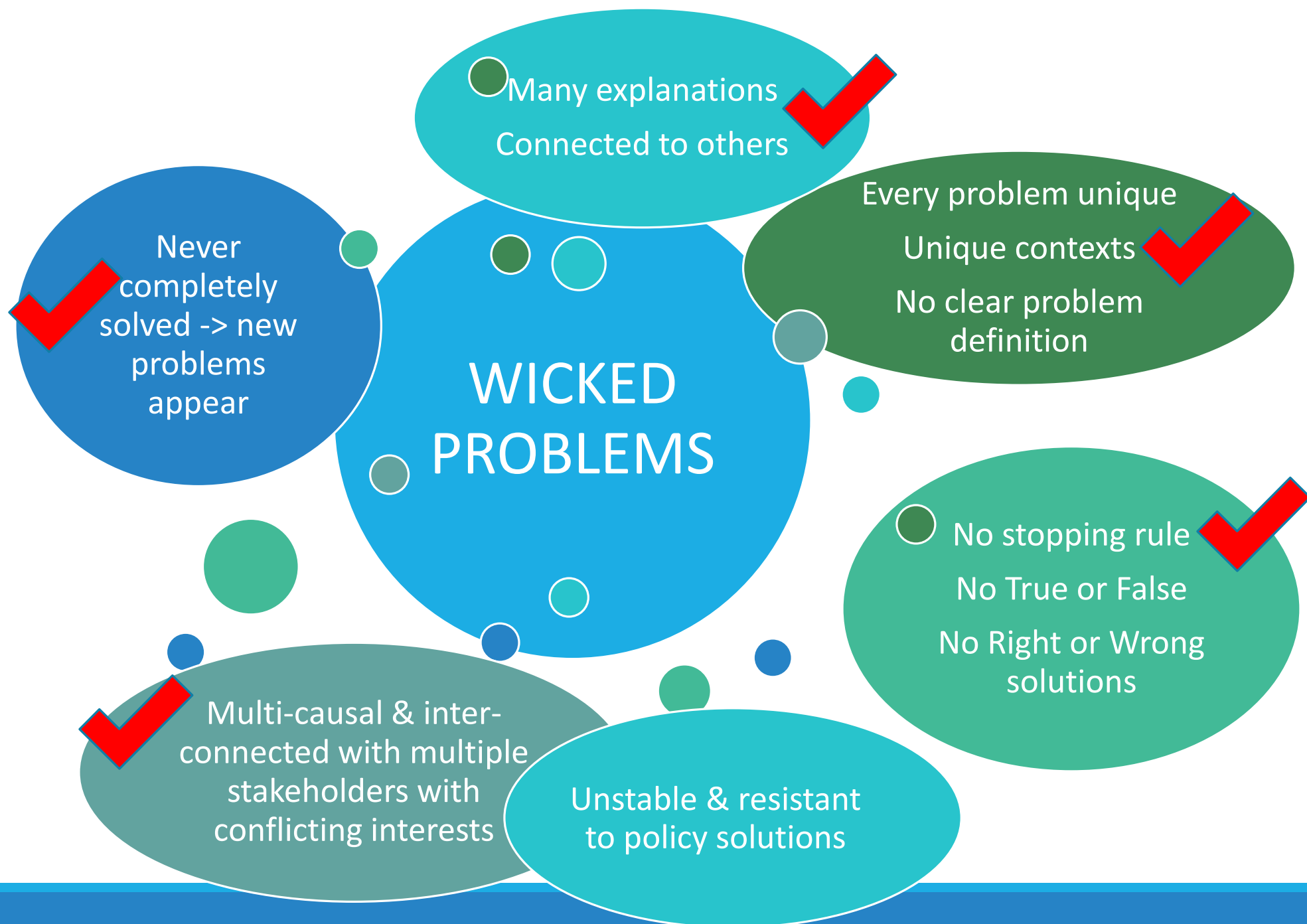
Moving target – still wicked -> from direct open defecation into indirect open defecation -> what happens to fecal sludge, wastewater? What is '**safely managed sanitation**'?



Not always 'wicked' problem or not entirely wicked problem across diverse socio-cultural landscape and geographical location -> where 'wicked', approach accordingly

Behaviour counts also with the wicked problems -> more creative work on behavior change techniques needed

Creativity and innovation – results expectations, outputs & indicators, and related available resources should not be too tightly framed!





Ok, may be 'Wicked Problem' but together we can do something about it!



[www.rwsspwn.org.np](http://www.rwsspwn.org.np)  
[www.rvwrmp.org.np](http://www.rvwrmp.org.np)

